



# U.S. IMMIGRATION

PROJECTING IMMIGRATION AS IT AFFECTS  
THE SOCIAL SECURITY AREA

March 29, 2019  
Technical Panel  
Washington, DC

Office of the Chief Actuary  
Social Security Administration

# Overview



2

- Definitions
- Projection Methodology
- Results
- Additional Issues
- More Information



# What is Migration?

3

Five types of migration:

- 1) Lawful permanent resident (LPR) immigration
- 2) Legal emigration
- 3) Other-than-LPR immigration
- 4) Other-than-LPR emigration
- 5) Adjustments of status (transfers)



# LPR Immigration

4

## □ LPR immigration:

Foreign-born individuals, either new arrivals or adjustments of status, who are granted LPR status.

## □ Legal emigration:

LPRs and citizens who leave the Social Security area.



# Other-than-LPR Immigration

5

## □ Other-than-LPR immigration:

Individuals who enter the Social Security area without LPR status, such as undocumented immigrants, temporary workers, and students.

## □ Other-than-LPR emigration:

Individuals from the OTL population who leave the Social Security area or adjust status to become LPRs.



# Adjustments of Status

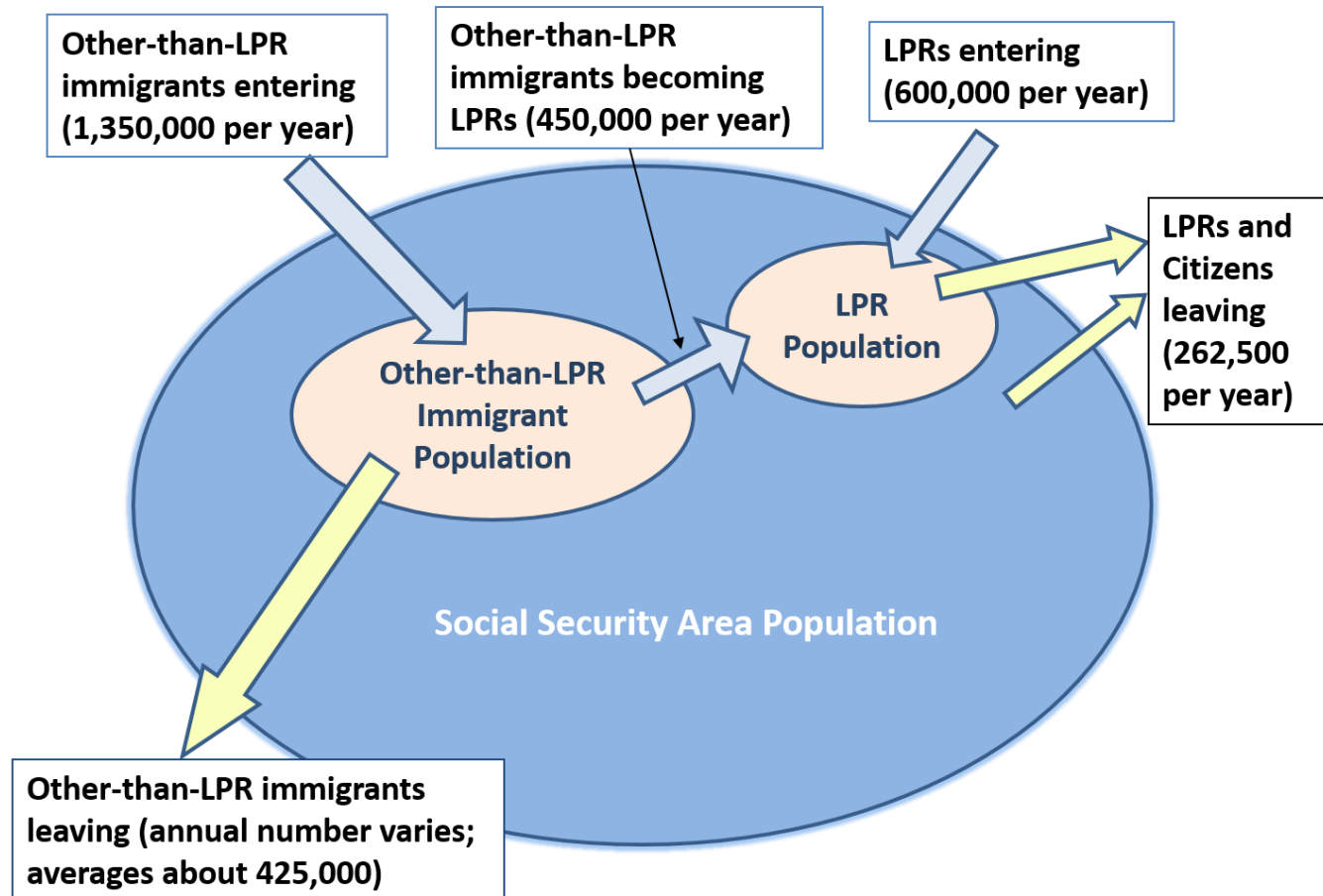
6

- Adjustments of status (transfers):
  - Individuals who adjust their status (transfer) from the other-than-LPR population to become LPRs.
- They are counted in the number of LPR immigrants.
- They are counted in the number of other-than-LPR emigrants.

# Immigration Flows

2018 Trustees Report, Intermediate Assumptions

## Modeling Immigration Flows





# Other-than-LPR Population

8

## □ Never authorized

Those that were never authorized to enter the Social Security area.

## □ Nonimmigrants

Those legally admitted for a limited period of time such as students, temporary worker, and exchange visitors.

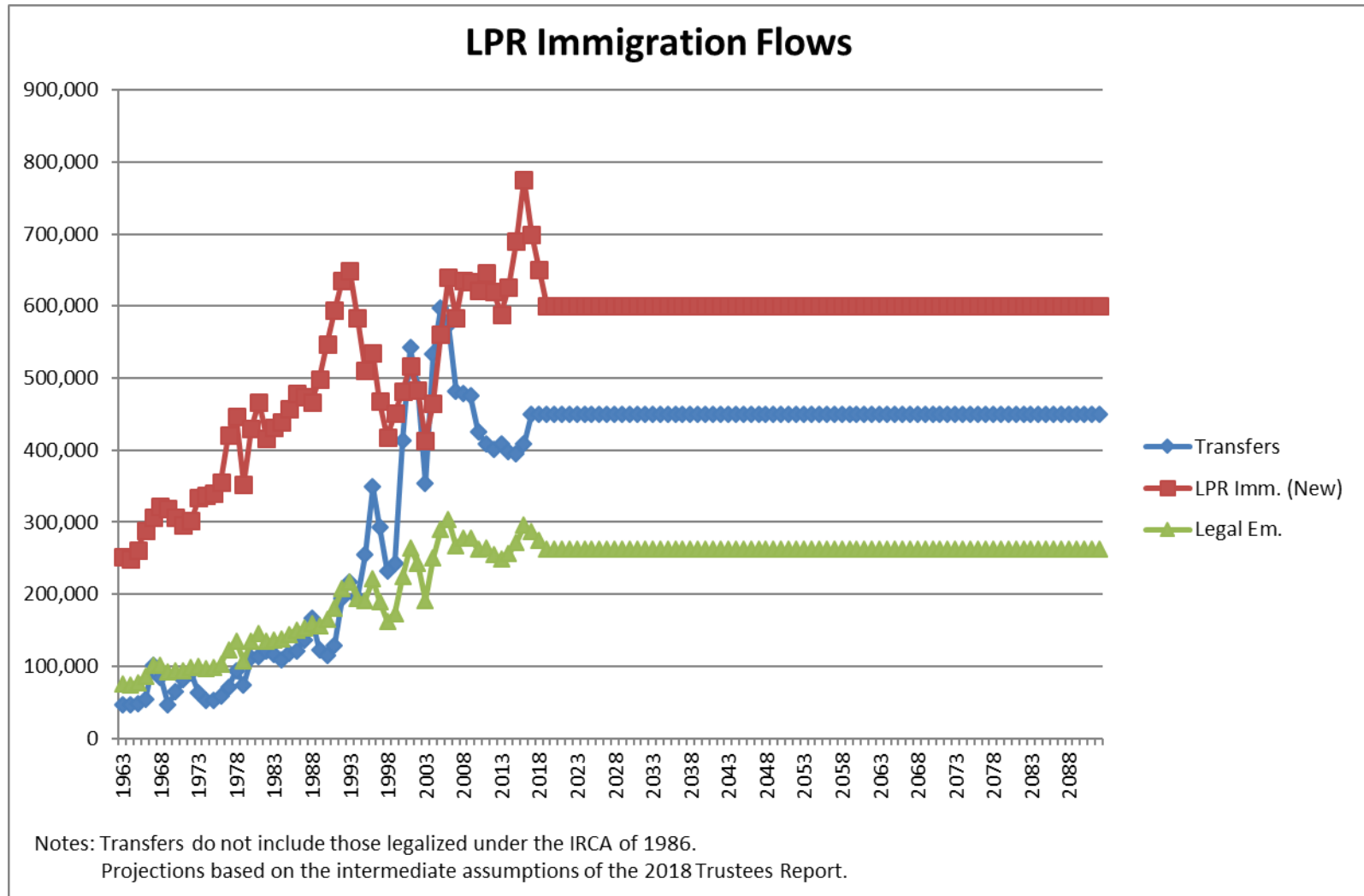
## □ Overstayers

Those that were nonimmigrants, but overstayed their visas.



# LPR Immigration Flows

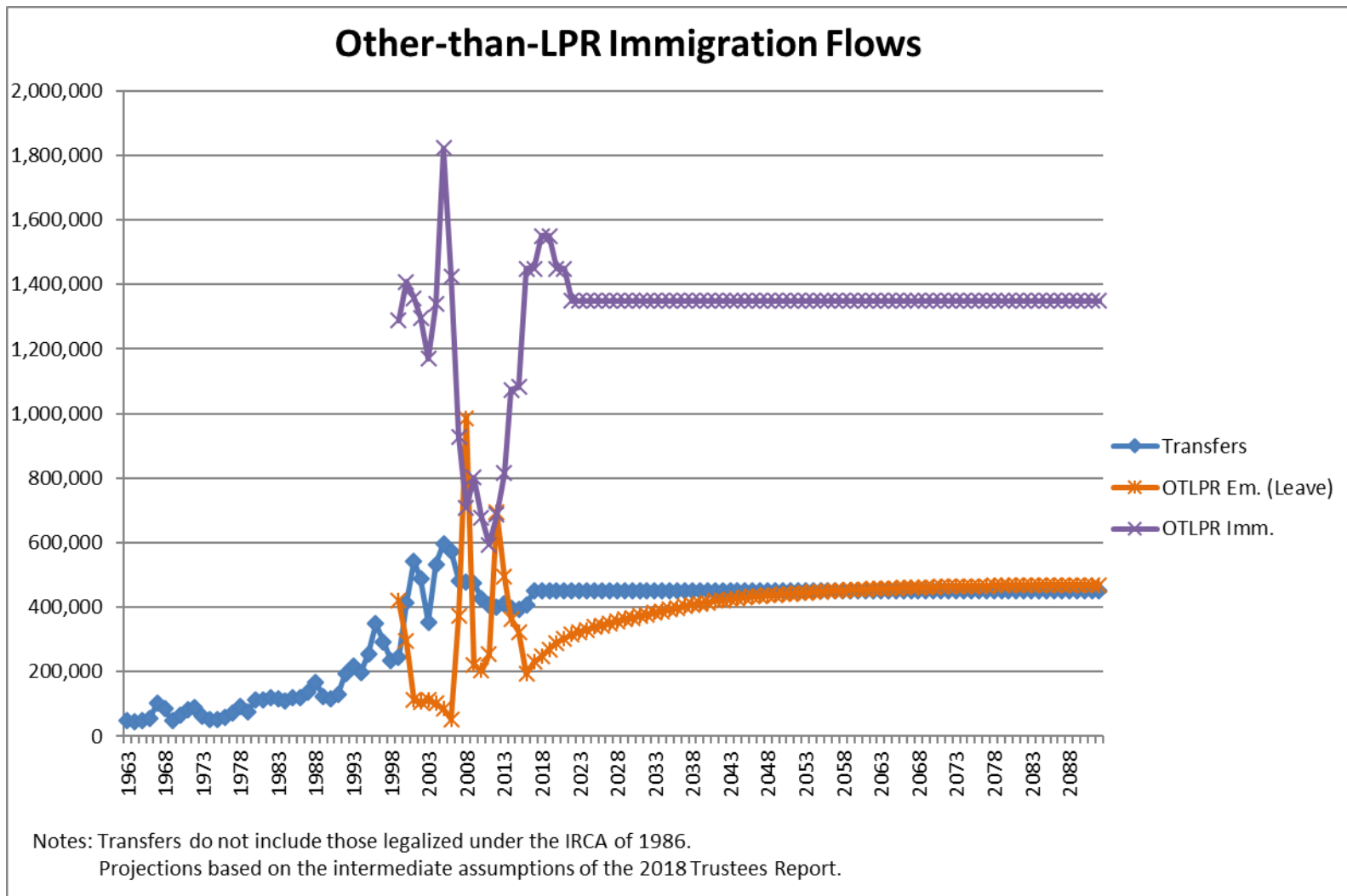
2018 Trustees Report, Intermediate Assumptions



# Other-than-LPR Immigration Flows



2018 Trustees Report, Intermediate Assumptions





# Projections – Distributions

11

- All 5 immigration categories are projected by single year of age and sex.
- In general, a distribution is used to break out the assumed total.
- Annual distributions are constant for all categories, except OTL emigration.



# Results – Population Stocks

12



Total population



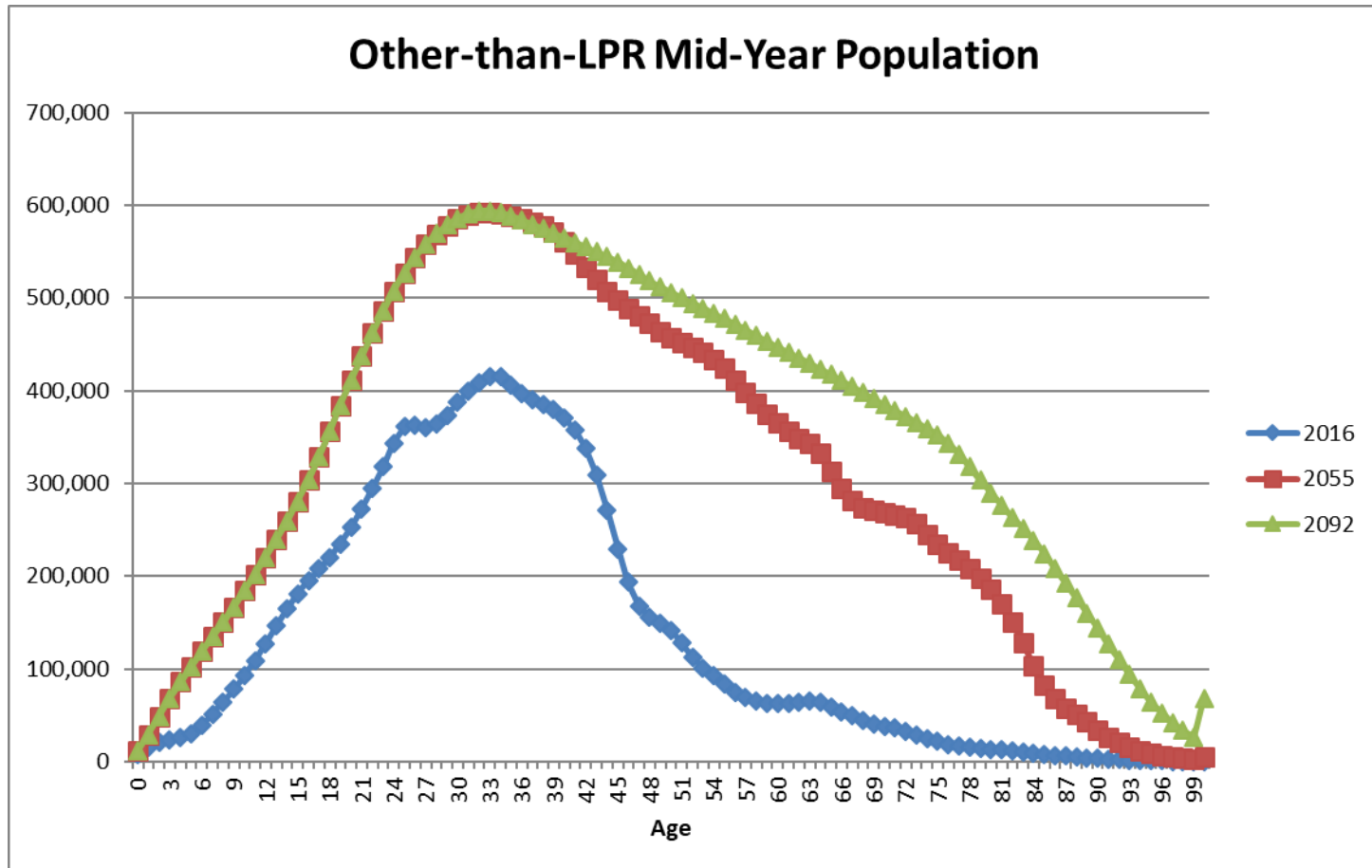
Foreign-born population



OTL population

# Other-than-LPR Population

2018 Trustees Report, Intermediate Assumptions



# Coverage and Earnings



14

## □ LPR immigrants:

- ▣ Assumed equally likely as US-born workers to be in the labor force, work in covered employment, and become insured for benefits.
- ▣ Average earnings assumed equal to the average for US-born workers.

## □ Other-than-LPR immigrants:

- ▣ Assumed just as likely to be in the labor force (in general).
- ▣ Less likely to work in covered employment.
- ▣ Much less likely to become insured for benefits.
- ▣ Average earnings assumed lower than the average for US-born workers (varies by category).



# Additional Issues

15

- LPR immigration is limited by law
  - ▣ Generally, we do not anticipate changes in law
- Other-than-LPR immigration is more difficult to project
  - ▣ Past panels have suggested a rise in proportion to overall population size
  - ▣ But will “demand” for other-than-LPR change in the future?
  - ▣ Will the US be viewed as a land of relative opportunity?
  - ▣ Will other nations become more or less desirable, affecting their emigration?



# More Information

16

## □ 2018 OASDI Trustees Report

<http://www.ssa.gov/OACT/TR/2018/tr2018.pdf>

## □ Actuarial Note, Number 148

[http://www.ssa.gov/OACT/NOTES/pdf\\_notes/note148.pdf](http://www.ssa.gov/OACT/NOTES/pdf_notes/note148.pdf)

## □ Actuarial Note, Number 151

[http://www.ssa.gov/OACT/NOTES/pdf\\_notes/note151.pdf](http://www.ssa.gov/OACT/NOTES/pdf_notes/note151.pdf)

## □ Demographic Assumptions

[http://www.ssa.gov/OACT/TR/2018/2018\\_Long-Range\\_Demographic\\_Assumptions.pdf](http://www.ssa.gov/OACT/TR/2018/2018_Long-Range_Demographic_Assumptions.pdf)

## □ Model Documentation

[http://www.ssa.gov/OACT/TR/2018/2018\\_LR\\_Model\\_Documentation.pdf](http://www.ssa.gov/OACT/TR/2018/2018_LR_Model_Documentation.pdf)