



Qualifying for Benefit Continuation After You Turn 18

The Age-18 Redetermination is especially important to youth with disabilities and their families.

We review the status of all Supplemental Security Income (SSI) recipients on a regular basis. We refer to this process as a redetermination. This process happens about every 3 years.

The age-18 redetermination is when we use adult criteria to decide if you still have a disability. The adult requirements are different from our requirements for a child. The adult criteria is based on your ability to earn money instead of your ability to complete daily tasks.



If we determine you do not have a disability after your age-18 redetermination, you may still be eligible for SSI by taking part in an educational or vocational program.

SSI Continued Payments (Section 301 Payments)

If you are no longer medically eligible for disability after the age-18 redetermination, your SSI payments usually stop. However, if you are participating in an approved special education, vocational rehabilitation (VR), or similar program or service, your benefits may continue.

You may qualify for continued SSI payments under Section 301 if:

- You participate in an appropriate VR program, or similar services that began before the month your disability stopped under our rules.
- We review your participation in the program and decide that if you continue in the program, you are not likely to resume disability benefits.

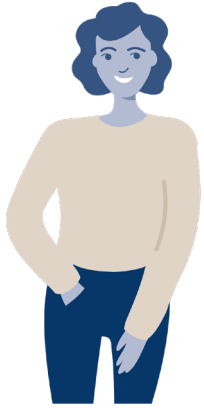
• Appropriate VR programs include:

- An Individualized Education Plan (IEP) for a youth 18-21.
- A VR agency using an individualized plan for employment.
- Support services using an individualized written employment plan.
- A written service plan with a school under Section 504 of the Rehabilitation Act.
- An approved Plan to Achieve Self-Support (PASS).

Under Section 301, your benefits may continue until:

- You complete the program.
- You stop participating in the program.
- We determine that even if you continue in the program, you are likely to resume disability benefits.

What can you learn from Maya about your options?



Maya receives SSI and has an IEP at school due to a learning disability. During an IEP planning meeting, Maya's parent asked:

“Will Maya always receive SSI?” The teacher explained the age-18 redetermination process and what could happen if Social Security found Maya is no longer medically eligible. Normally her SSI payments would stop in that

case. However, if Maya is 18-21 years old, she may be eligible to continue receiving SSI while participating in an approved IEP. Maya's teacher also explained that it's important to inform Social Security during the age-18 review process that Maya has an IEP.

The teacher also stressed how important it is to report all of Maya's earnings to Social Security. While our work incentives encourage people receiving SSI to try working, the amount and types of income that Maya earns will affect her monthly cash payments.

Additional Information

For additional information, read *What You Need To Know About Your Supplemental Security Income (SSI) When You Turn 18* (Publication No. 05-11005) online at www.ssa.gov/pubs/EN-05-11005.pdf.

Youth Toolkit 2025

You can find additional information and resources to make a successful transition to adulthood at www.ssa.gov/youth/



Securing today
and tomorrow

SSA.gov |     

Publication No. 64-118 | August 2025 (Recycle prior editions)
Qualifying for Benefit Continuation After You Turn 18
Produced and published at U.S. taxpayer expense